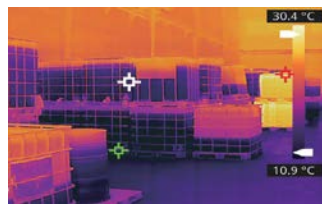
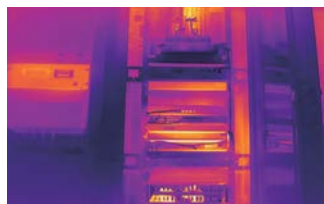


RTBU-FB465-T-9.1mm

Dual-Spectrum Thermal Network Camera



RTBU-FB225 Series dual-spectrum thermal network camera equipped with the advanced thermal detectors and high-resolution visible module. Based on the AI algorithm, the camera is able to detect line crossing, intrusion and region entrance/exit and various measurement rules can be set. RTBU-FB225 Series could be used for perimeter defense, fire prevention in warehouse or gas station, or industrial temperature measurement.



12μm VOx Uncooled Detector

Equipped with new generation QSnet® 12μm uncooled Vox detector to provide advanced thermal image quality

High Accuracy

-20°~+550° measure range, ±2° accuracy with various measurement rules

Smart Alarm

Supports event linkage alarm, supports sound or light alarm

Dual-Spectrum Image

Visible light image & thermal image for 24-hours surveillance

Smart Video Analysis

Supports Line Crossing, Intrusion on both visible/thermal channel, supports fire point detection

High Compatibility

Provides NVR and VMS client, compatible with ONVIF, GB28181 protocols, provides SDK for development

Product Specifications

Technical Specifications	RTBU-FB465-T-9.1mm		
	Thermal		
Detector Type	VOx, uncooled FPA detectors		
Spectral Range	8~14μm		
NETD	≤40mK(@25°C,F#1.0,25Hz)		
Resolution	256×192		
Pixel size	12μm		
Focal length	3.2mm	7mm	10mm
	Visible light		
Sensor	5MP 1/2.8" CMOS		
Focal length	4mm	8mm	12mm
FOV	82°×59°	39°×29°	25°×18°
IR distance	Max. 30m		
	Dual-spectrum		
Dual-Spectrum Fusion	Display the details of visible channel on thermal channel		
Temperature display	Display the temperature information on the visible light channel		
	Temperature measurement		
Range	-20° ~ +550°		
Accuracy	±2° or ±2%		
Measurement rules	3 rule types (point, area, line), 36 rules in total (12 points, 12 areas, and 12 line).		
	Smart function		
Fire detection	Support fire detection		
VCA	Line Crossing/Intrusion detection		
Alarm action	Record/Snapshot/E-mail/Relay output		
Two-way talk	Support two-way talk		
	System interfaces		
Power	DC 12V±25% / PoE(802.3af)		
Network	1×RJ45 10M/100M self-adaptive interface		
RS485	1×RS485, support Pelco		
Audio input	1×audio in		
Audio output	1×audio out, 1×built-in Speaker		
Alarm input	2×DC 0~5V alarm input		
Alarm output	1×NO relay output		
Edge storage	Support Micro SD (max. 256G)		
Reset button	Support		
	General		
Work temperature	-40° ~ +70° ; <95%RH		
Protection	IP67		
Power consumption	Max.< 3W		
Dimension (mm)	265×99×87		
Weight	≈950g		

Application

