

EX PT Thermal Robo Cameras Series



Order Guide

Lens \ Camera	384*288 pixel	640*512pixel
9mm	JM612A-V6-TM9	JM612A-V6-TM9H
10mm	JM612A-V6-TM10	JM612A-V6-TM10H
13mm	JM612A-V6-TM13	JM612A-V6-TM13H
19mm	JM612A-V6-TM19	JM612A-V6-TM19H
25mm	JM612A-V6-TM25	JM612A-V6-TM25H
35mm	JM612A-V6-TM35	JM612A-V6-TM35H

Unique Features



Explosion Proof

Accredited by CNEEx/CQST with EXD II Ct6 certification



Vandal proof

To resist damage by stone or hammer



Bullet proof

Resistant to the impact from the short gun bullets



Corrosion proof

The stainless steel body can be resistant to seawater or chemical corrosion



Water proof

Sealed to IP66 and NEMA 4X



Dust proof

Resistant to coal dust



Features Summary

PT Motor Features

- ◆ The body machined from 8~22mm special type aluminum alloy
- ◆ With sealed waterproof , dust proof (IP66) , bullet proof and vandal proof design
- ◆ Black or white color optional (Others customized color optional)
- ◆ Power off memory
- ◆ Compatible to Pelco P/D protocol and customized protocol for optional
- ◆ User definable 128 preset , 8 preset tour
- ◆ Auto scan, pattern scan
- ◆ Manual Zero Calibration
- ◆ RJ45 output or RS485 output
- ◆ Support Pelco P/D protocol
- ◆ Pan and tilt : 360° continue rotation
- ◆ Humidity resistance: maximum 98%
- ◆ CE & ROSH certification
- ◆ Capture alarm signal, stop scanning
- ◆ temperature resistant: -20°C ~ +50°C (-40 °C ~ +75°C Military / industrial standard optional)

PT Motor Specifications

General Performance	
Rotation Range	Pan: 0~360° continuous rotation, Tilt: 0~360° continuous rotation
Rotation Speed	Pan: 0.23°~60°/s, Tilt: 0.23 ° ~ 40° /s
Preset Speed	Pan: 60° /s, Tilt: 40 ° /s
Preset Accuracy	+/- 0.03° (auto or manual)
Auto Scan	1°-40°/s (auto or manual)
The Body	Aluminum alloy body, average 22mm thick
Power Supply	24VAC/ 24VDC (DC12 V optional)
Power Consumption	Max 50W, Min 28W
Working Temperature	-20°C~+50°C
Storage Temperature	-40°C~ +60°C

Thermal Camera Specification

Component	Thermal Camera	
Output Resolution	384*288 pixel	640 X 512 pixel
Thermal Imager	Uncooled VOx Microbolometer	
Pixel Size	17μm	
Spectral Band	7.5~13.5μm	
Image Control	Invert, revert, continuous digital zoom, false color or monochrome etc.	
NETD	< 35mk(@25° C,F#=1.0)	
Digital Zoom	8 X	

Thermal Lens Specification

384*288pixel

Focus	Iris	viewing angle		focusing range	Focus Mode	Person	Vehicle
		Pan	Tilt			6 pixel Detection	
9mm	1.0	39.9°	30.4°	∞~0.5m	Manual	150m	200m
10mm	1.0	36..°	27.5°	∞~0.5m	Manual	170m	220m
13mm	1.0	28.2°	21.3°	∞~0.5m	Manual	220m	290m
19mm	1.0	19.5°	14.7°	∞~0.5m	Manual	330m	420m
25mm	1.0	14.9°	11.2°	∞~0.5m	Manual	440m	500m
35mm	1.0	10.7°	8.0°	∞~0.5m	Manual	600m	780m

640*512pixel

Focus	Iris	viewing angle		focusing range	Focus Mode	Person	Vehicle
		Pan	Tilt			6 pixel Detection	
9mm	1.0	62.3°	51.6°	∞~0.5m	Manual	150m	200m
10mm	1.0	32°	25.8°	∞~0.5m	Manual	170m	220m
13mm	1.0	45.4°	37.0°	∞~0.5m	Manual	220m	290m
19mm	1.0	32.0°	25.8°	∞~0.5m	Manual	330m	420m
25mm	1.0	24.6°	19.8°	∞~0.5m	Manual	440m	500m
35mm	1.0	17.7°	14.2°	∞~0.5m	Manual	600m	780m

Image Reference

Image Reference for Thermal Camera Part

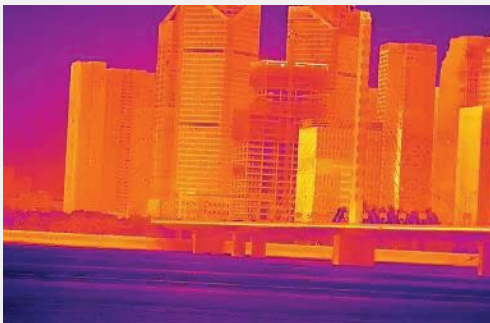
Lens: 100mm
640*480 Pixel
Detection Distance: 100m
Detection target: People



Lens: 200mm
640*480 Pixel
Detection Distance: 300m
Detection target: Person



Lens: 200mm
640*480 Pixel
Detection Distance: 300m
Detection target: Car



Pseudo color